

## CATOLITE RED TONER BT:1 – PIGMENT RED 49:1

### Product Description:

<b>Trade Name</b>	Catolite
<b>Product</b>	Red Toner BT:1
<b>C.I. Name</b>	Pigment Red 49:1
<b>C.I. No</b>	15630:1
<b>CAS NO</b>	1103-38-4
<b>Chemical Class</b>	Monoazo: 2-Naphthol acid Lake
<b>EU No.</b>	214-160-6
<b>Hue</b>	Red (Tint Tone -Bluish Pink)

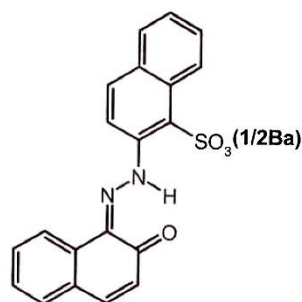
### Full Strength



### Reduction 1:10



### Chemical Structure:



### Physical Properties:

<b>Specific Gravity</b>	1.3
<b>Oil Absorption (gm/100 gms)</b>	56
<b>Bulk Density</b>	1.4 gm/cm <sup>3</sup>
<b>Ph</b>	7
<b>Sieve Residue on 45 μ</b>	<1%
<b>Moisture Content</b>	Max.1%

### Application:

<b>Paint</b>	Interior Paints
<b>Ink</b>	Offset Ink - Flexo Solvent & Water - Gravure: Polyamide & NC/Vinyl
<b>Plastic</b>	

### Standard Packing:

- 20 Kgs HDPE Bags /Paper Bags
- Different Types of Packaging available on request

### Fastness Properties:

Light (Full)	Light (Reduced)	Heat: 150°C/ 20min	Water	5%HCL	5% NaOH	N-Butanol	N-Butyl Acetate	MEK
5	2	Suitable	5	5	3	4	3	2

The above shades have been generated electronically and should therefore not be used for comparison purposes. The information mentioned herein are based on our current knowledge and cannot be taken as guarantee. The data mentioned herein are indicative without warranty and are meant only for guidance. It is recommended that customer should test the products under actual conditions in particular application and we do not accept any liability relating to use of our product.